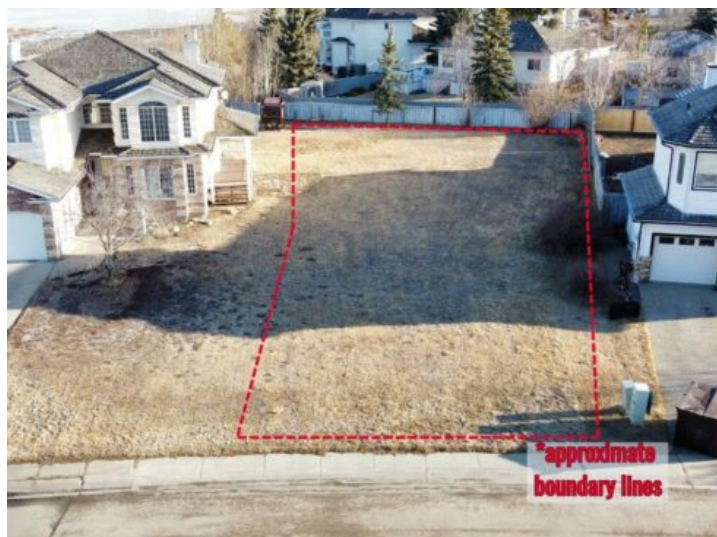


**9106 119 Avenue  
Grande Prairie, Alberta**

**MLS # A2120074**



**\$160,000**

**Division:** Crystal Lake Estates

**Lot Size:** 0.24 Acre

**Lot Feat:** -

**By Town:** -

**LLD:** 31-71-5-W6

**Zoning:** RG

**Water:** -

**Sewer:** -

**Utilities:** -

Build your dream home in this quiet cul-de-sac in Crystal Lake Estates surrounded by established properties and mature trees with easy access to walking trails and playgrounds. With over 56 feet of street frontage and almost 1/4 acre of total space, there is plenty of room to build your dream home and develop a beautiful lot with potential for views of Crystal Lake. This is a unique opportunity at a great price so contact your favorite real estate professional for more information or to arrange a time to walk the lot.